



A&C GROUP INDUSTRIES

LA QUALITÉ REND LA
VIE MEILLEURE

SARL Algeria and China Group Industries

Zone Industrielle Essenia2 Classe 1 Ilot 13 Wilaya de Oran Algerie

Contact: 00213(0)560976666

Email: sarl.acgroup@gmail.com

Site: www.ac-group-industries.com

Facebook: Sarl A&C group industries



CATALOGUE

PRÉSENTATION

La société **ALGERIA AND CHINA GROUP INDUSTRIES**, créée en 2016, issue d'un partenariat algéro-chinois, spécialisée dans la recherche, le développement, la production, la vente et la distribution de différents canalisations. Nous assurons nos différents partenaires et clients sur le sérieux et la crédibilité de notre entreprise. En effet son travail est basé sur le développement continu, l'innovation et la recherche de la perfection en s'appuyant sur les dernières technologies en cours dans le monde. Notre but essentiel est d'assurer une production de qualité supérieure selon la norme internationale iso 9001.

Mechanical characteristics

When tested in accordance with the test methods as specified in Table 9 using the indicated parameters, the pipe shall withstand the hydrostatic (hoop) stress without bursting. In the case of pipes with (a) barrier layer(s) the test shall be carried out on test pieces produced without the barrier layer(s).

Table 9 — Mechanical characteristics of pipes

Characteristic	Requirement	Joining Secs				Test method
		PP-R				
Resistance to internal pressure	No failure during the test period	Hydrostatic (hoop) stress MPa	Test temp. °C	Test period h	Number of test pieces	EN 921:1994
		16,0	20	1	3	
		4,3	95	22	3	
		3,8	95	165	3	
		3,5	95	1000	3	
		Test parameters for all tests				
Sampling procedure Type of end cap Orientation of test piece Type of test			a Type a) Not specified Water-in-water			

Table 10 — Physical and chemical characteristics of pipes

Characteristic	Requirement	Test parameters		Test method
		Parameter	Value	
Longitudinal reversion	≤ 2%	PP-R Duration of exposure for: $e_n \leq 8\text{mm}$ $8\text{mm} < e_n \leq 16\text{mm}$ $e_n > 16\text{mm}$ Number of test pieces	135°C 1h 2h 4h 3	Method B of EN 743:1994 (oven test)
Thermal stability by hydrostatic pressure testing	No bursting during the test period	Sampling procedure Hydrostatic(hoop) stress PP-R Test temperature Type of test End cap Orientation Test period Number of test pieces	1,9 MPa 110°C Water-in-air Type a) Not specified 8760 h 1	EN 921:1994
Impact resistance	<10%	Sampling procedure Test temperature PP-R Number of test pieces	1) 0°C 10	ISO 9854
Melt flow rate (compound)	≤0,5 g/10 min	Test temperature Mass Number of test pieces	230°C 2,16kg 3	ISO 1133
Melt flow rate (pipe)	30% maximum difference compared with compound	Test temperature Mass Number of test pieces	230°C 2,16kg 3	ISO 1133

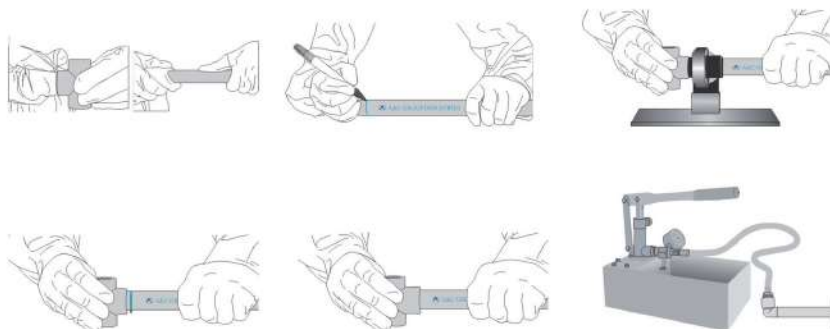
a the sampling procedure is not specified. For guidance see CEN ISO/TS 15874-7⁽⁴⁾.

Welding Technique

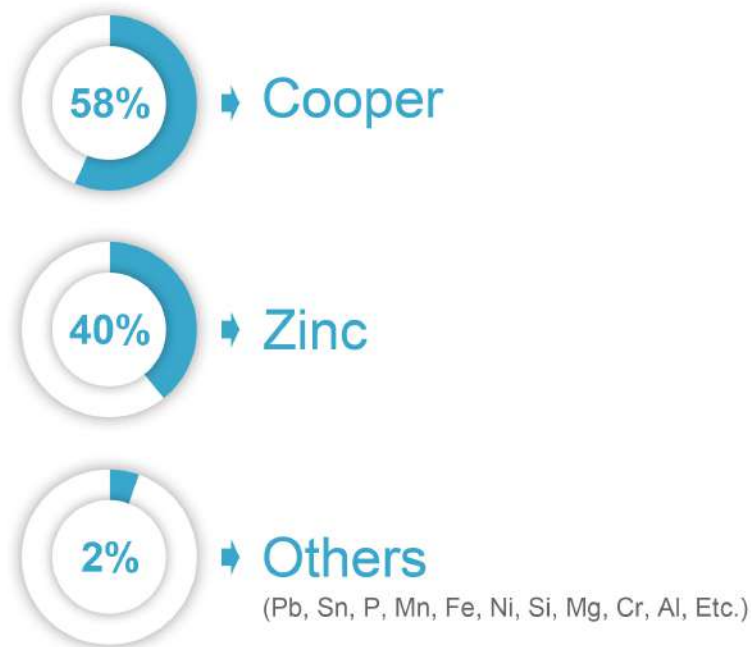
The quality of an installation depends on the tightness, stability and lifetime of its connections. Fusion welding technique is safe because parts made of polypropylene create a homogenous connection, within this process. When the welded joint cools down, it can be fully loaded. The resulting joints are very reliable, and they are as strong as the pipe itself. The pipe may even break before the socket welded joint under tension.

Welding takes only a few seconds. After cutting the pipe perpendicularly to its axis, both the pipes and the fittings (these must be clean if not please clean it with a cloth or alcohol/water solution) are heated with the welding machine (generally up to 260 °C +/- 10 °C) and they are joined without twisting. For proper connections please follow the table given below.

Pipe Diameter(mm)	Heating Secs	Joining Secs	Cooling time(minutes)
20	5	4	2
25	7	4	3
32	8	6	4
40	12	6	4
50	18	6	5
63	24	8	6
75	30	8	8
90	40	8	8
110	50	10	8



Metal Inserts Used For The Fittings Are BRASS MS 58 Which Means



A&C PP-R Pipes →

أنبوب من عزل الزجاج

Tube fibre de verre en PPR/PN25/S2.5 / PPR GLASS FIBER PIPE



SIZE	CODE
Ø20×3.4	TFV2025
Ø25×4.2	TFV2525
Ø32×5.4	TFV3225
Ø40×6.7	TFV4025
Ø50×8.3	TFV5025
Ø63×10.5	TFV6325
Ø75×12.5	TFV7525
Ø90×15.0	TFV9025
Ø110×18.3	TFV11025
Ø125×20.8	TFV12525
Ø160×26.6	TFV16025

أنبوب مياه باردة

Tube eau en froide/PN20/S2.5 / PPRC PIPE



SIZE	CODE
Ø20×3.4	TEF2020
Ø25×4.2	TEF2520
Ø32×5.4	TEF3220
Ø40×6.7	TEF4020
Ø50×8.3	TEF5020
Ø63×10.5	TEF6320
Ø75×12.5	TEF7520
Ø90×15.0	TEF9020
Ø110×18.3	TEF11020
Ø125×20.8	TEF12520
Ø160×26.6	TEF16020

أنبوب مياه باردة

Tube eau en froide/PN16/S3.2 / PPR PIPE



SIZE	CODE
Ø20×2.8	TEF2016
Ø25×3.5	TEF2516
Ø32×4.4	TEF3216
Ø40×5.5	TEF4016
Ø50×6.9	TEF5016
Ø63×8.6	TEF6316
Ø75×10.3	TEF7516
Ø90×12.3	TEF9016
Ø110×15.1	TEF11016

أنبوب من الألمنيوم

Tube en Aluminium/PN20/S5 / PPRC PIPE



SIZE	CODE
Ø20	TA2020
Ø25	TA2520
Ø32	TA3220
Ø40	TA4020
Ø50	TA5020
Ø63	TA6320

أنبوب عازل للضوء

Tube Bicouches/PN20/S5 / PPRC PIPE



SIZE	CODE
Ø20	TB2020
Ø25	TB2520
Ø32	TB3220
Ø40	TB4020
Ø50	TB5020
Ø63	TB6320

أنبوب وصل

Manchon Réduction PPR / PPR REDUCTION SOCKET



SIZE	CODE
Ø25/Ø20	MR2520
Ø32/Ø20	MR3220
Ø32/Ø25	MR3225

قاعدة

Manchon PPR / PPR SOCKET



SIZE	CODE
Ø20	MA0020
Ø25	MA0025
Ø32	MA0032
Ø40	MA0040
Ø50	MA0050
Ø63	MA0063
Ø75	MA0075
Ø90	MA0090
Ø110	MA0110
Ø125	MA0125
Ø160	MA0160

نقاصة

Réduction PPR / PPR REDUCTION

SIZE	CODE	SIZE	CODE
Ø25/Ø20	RE2520	Ø75/Ø40	RE7540
Ø32/Ø20	RE3220	Ø75/Ø50	RE7550
Ø32/Ø25	RE3225	Ø75/Ø63	RE7563
Ø40/Ø20	RE4020	Ø90/Ø40	RE9040
Ø40/Ø25	RE4025	Ø90/Ø50	RE9050
Ø40/Ø32	RE4032	Ø90/Ø63	RE9063
Ø50/Ø20	RE5020	Ø90/Ø75	RE9075
Ø50/Ø25	RE5025	Ø110/Ø32	RE11032
Ø50/Ø32	RE5032	Ø110/Ø40	RE11040
Ø50/Ø40	RE5040	Ø110/Ø50	RE11050
Ø63/Ø20	RE6320	Ø110/Ø63	RE11063
Ø63/Ø25	RE6325	Ø110/Ø75	RE11075
Ø63/Ø32	RE6332	Ø110/Ø90	RE11090
Ø63/Ø40	RE6340	Ø125/Ø90	RE12590
Ø63/Ø50	RE6350	Ø125/Ø110	RE125110
Ø75/Ø20	RE7520	Ø160/Ø90	RE16090
Ø75/Ø25	RE7525	Ø160/Ø110	RE160110
Ø75/Ø32	RE7532	Ø160/Ø125	RE160125



كوع بزواوية 45 درجة

Coude 45° PPR / PPR ELBOW 45°

SIZE	CODE	SIZE	CODE
Ø20	CO2045	Ø75	C07545
Ø25	CO2545	Ø90	C09045
Ø32	CO3245	Ø110	C011045
Ø40	CO4045	Ø125	CO12545
Ø50	CO5045	Ø160	CO16045
Ø63	CO6345		



كوع بزواوية 90 درجة

Coude 90° / PPR ELBOW 90°

SIZE	CODE	SIZE	CODE
Ø20	CO2090	Ø75	C07590
Ø25	CO2590	Ø90	C09090
Ø32	CO3290	Ø110	C011090
Ø40	CO4090	Ø125	CO12590
Ø50	CO5090	Ø160	CO16090
Ø63	CO6390		



حامل أنبوب

Collier Simple PPR / PPR BRACELET



SIZE	CODE
Ø20	CS0020
Ø25	CS0025
Ø32	CS0032
Ø40	CS0040
Ø50	CS0050

حامل أنبوب الثنائي

Collier double PPR / PPR DOUBLE BRACELET



SIZE	CODE
Ø20	CD0020
Ø25	CD0025
Ø32	CD0032

حامل أنبوب مغلقة الثنائية

Collier A CLIC simple PPR / PPR BRACELET WITH COVER

SIZE	CODE	SIZE	CODE
Ø16	CCS0016	Ø32	CCS0032
Ø20	CCS0020	Ø40	CCS0040
Ø25	CCS0025	Ø50	CCS0050



حامل أنبوب الثنائي مغلقة الثنائية

Collier A CLIC double PPR / PPR DOUBLE BRACELET WITH COVER



SIZE	CODE
Ø16	CCD0016
Ø20	CCD0020
Ø25	CCD0025

تي غير متساوية

Te inegal PPR / PPR INEGALE TEE

SIZE	CODE	SIZE	CODE
Ø25/Ø20/Ø25	TI2520	Ø75/Ø40/Ø75	TI7540
Ø32/Ø20/Ø32	TI3220	Ø75/Ø50/Ø75	TI7550
Ø32/Ø25/Ø32	TI3225	Ø75/Ø63/Ø75	TI7563
Ø40/Ø20/Ø40	TI4020	Ø90/Ø40/Ø90	TI9040
Ø40/Ø25/Ø40	TI4025	Ø90/Ø50/Ø90	TI9050
Ø40/Ø32/Ø40	TI4032	Ø90/Ø63/Ø90	TI9063
Ø50/Ø20/Ø50	TI5020	Ø90/Ø75/Ø90	TI9075
Ø50/Ø25/Ø50	TI5025	Ø110/32/Ø110	TI11032
Ø50/Ø32/Ø50	TI5032	Ø110/40/Ø110	TI11040
Ø50/Ø40/Ø50	TI5040	Ø110/50/Ø110	TI11050
Ø63/Ø20/Ø63	TI6320	Ø110/63/Ø110	TI11063
Ø63/Ø25/Ø63	TI6325	Ø110/75/Ø110	TI11075
Ø63/Ø32/Ø63	TI6332	Ø110/90/Ø110	TI11090
Ø63/Ø40/Ø63	TI6340	Ø125/Ø90/Ø125	TI12590
Ø63/Ø50/Ø63	TI6350	Ø125/Ø110/Ø125	TI125110
Ø75/Ø20/Ø75	TI7520	Ø160/Ø110/Ø160	TI160110
Ø75/Ø25/Ø75	TI7525	Ø160/Ø125/Ø160	TI160125
Ø75/Ø32/Ø75	TI7532		



أكرة وصل بسن مؤنث

Mamelon femelle en PPR / PPR FEMALE NIPPLLE

SIZE	CODE
Ø20*1/2"	MF2015
Ø20*3/4"	MF2020
Ø25*1/2"	MF2515
Ø25*3/4"	MF2520
Ø32*1/2"	MF3215
Ø32*3/4"	MF3220
Ø32*1"	MF3225
Ø40*1*1/4"	MF4032
Ø50*1 1/2"	MF5040
Ø63*2"	MF6350
Ø75*2 1/2"	MF7563
Ø90*3"	MF9075
Ø110*4"	MF11090



أكرة وصل بسن مذكر

Mamelon mâle en PPR / PPR MALE ELBOW

SIZE	CODE
Ø20*1/2"	MM2015
Ø20*3/4"	MM2020
Ø25*1/2"	MM2515
Ø25*3/4"	MM2520
Ø32*1/2"	MM3215
Ø32*3/4"	MM3220
Ø32*1"	MM3225
Ø40*1*1/4"	MM4032
Ø50*1 1/2"	MM5040
Ø63*2"	MM6350
Ø75*2 1/2"	MM7563
Ø90*3"	MM9075
Ø110*4"	MM11090



مسخن صنبور

Vanne de radiateurs Mamelon / VALVE OF RADIATORS



SIZE	CODE
Ø20*½"	VRM2015
Ø25*¾"	VRC2520

مسخن صنبور

Vanne de radiateurs Coude / VALVE OF RADIATORS ELBOW



SIZE	CODE
Ø20*½"	VRC2015
Ø25*¾"	VRC2520

صنبور منور

Vanne sphérique / PPR PLASTIC BALL VALVE



SIZE	CODE
Ø20	VS0020
Ø25	VS0025
Ø32	VS0032
Ø40	VS0040
Ø50	VS0050
Ø63	VS0063
Ø75	VS0075
Ø90	VS0090
Ø110	VS0110

كوع نقاص

Coude Réduction PPR / PPR 90°REDUCTION ELBOW



SIZE	CODE
Ø25/Ø20	CR2520
Ø32/Ø25	CR3225

كوع بسن ذكر 90 درجة

Coude mâle en PPR 90° / PPR 90°MALE ELBOW



SIZE	CODE
Ø20*½"	CM2015
Ø20*¾"	CM2020
Ø25*½"	CM2515
Ø25*¾"	CM2520
Ø32*½"	CM3215
Ø32*¾"	CM3220
Ø32*1"	CM3225

تة

Te PPR / PPR TEE



SIZE	CODE
Ø20	TE0020
Ø25	TE0025
Ø32	TE0032
Ø40	TE0040
Ø50	TE0050
Ø63	TE0063
Ø75	TE0075
Ø90	TE0090
Ø110	TE0110
Ø125	TE0125
Ø160	TE0160

كوع بسن مؤنث 90 درجة

Coude femelle en PPR 90° / PPR 90°FEMALE ELBOW



SIZE	CODE
Ø20*½"	CF2015
Ø20*¾"	CF2020
Ø25*½"	CF2515
Ø25*¾"	CF2520
Ø32*½"	CF3215
Ø32*¾"	CF3220
Ø32*1"	CF3225

أكرة وصل متحركة بسن مؤنث

Mamelon avec Raccord / PPR NIPPE WITH PLASTIC LOOSE NUT



SIZE	CODE
Ø20*½"	MAR2015
Ø20*¾"	MAR2020
Ø25*¾"	MAR2520
Ø32*1"	MAR3225
Ø32*¾"	MAR3220
Ø40*1*1/4"	MAR4032
Ø50*1½"	MAR5040

كوع متحرك بسن مؤنث

Coude avec Raccord / PPR ELBOW WITH PLASTIC LOOSE NUT



SIZE	CODE
Ø20*½"	CAR2015
Ø20*¾"	CAR2020
Ø25*¾"	CAR2520
Ø32*1"	CAR3225

تي بسن مؤنث

TE femelle en PPR / PPR FEMALE TEE

SIZE	CODE	SIZE	CODE
Ø20*½"	TF2015	Ø40*1"	TF4025
Ø20*¾"	TF2020	Ø40*1*1/4"	TF4032
Ø25*½"	TF2515	Ø50*½"	TF5015
Ø25*¾"	TF2520	Ø50*¾"	TF5020
Ø32*½"	TF3215	Ø50*1"	TF5025
Ø32*¾"	TF3220	Ø63*½"	TF6315
Ø32*1"	TF3225	Ø63*¾"	TF6320
Ø40*½"	TF4015	Ø63*1"	TF6325
Ø40*¾"	TF4020		



تي متحرك بسن مؤنث

TE avec Raccord / PPR TEE WITH PLASTIC LOOSE NUT



SIZE	CODE
Ø20*½"	TAR2015
Ø20*¾"	TAR2020
Ø25*¾"	TAR2520
Ø32*1"	TAR3225

تي بسن مؤنث

TE mâle en PPR / PPR MALE TEE



SIZE	CODE
Ø20*½"	TM2015
Ø20*¾"	TM2020
Ø25*½"	TM2515
Ø25*¾"	TM2520
Ø32*½"	TM3215
Ø32*¾"	TM3220
Ø32*1"	TM3225
Ø40*1*1/4"	TM4032

قاعدة خلاط ثابت مع كوع مؤنث خارجي

Applique double fix femelle apparent / PPR DOUBLE BATTERY CONNECTION FEMALE APPARENT



SIZE	CODE
20*½"	ADFA2015
20*¾"	ADFA2020

قاعدة خلاط ثابت مع كوع مؤنث خارجي

Applique double fix mâle apparent / PPR DOUBLE BATTERY CONNECTION MALE APPARENT



SIZE	CODE
20*½"	ADMA2015
20*¾"	ADMA2020

قاعدة خلاط ثابت مع كوع مؤنث داخلي

Applique double fix femelle encastrée / PPR DOUBLE BATTERY CONNECTION FEMALE



SIZE	CODE
Ø20*½"	ADFE2015
Ø20*¾"	ADFE2020
Ø25*½"	ADFE2515
Ø25*¾"	ADFE2520

قاعدة خلاط ثابت مع كوع منكر داخلي

Applique double fix mâle encastrée / PPR DOUBLE BATTERY CONNECTION MALE



SIZE	CODE
Ø20*½"	ADMA2015
Ø20*¾"	ADMA2020
Ø25*½"	ADMA2515
Ø25*¾"	ADMA2520

محول من البلاستيك

Raccord union plastique / PPR PLASTIC TRANSITION



SIZE	CODE
Ø20	RUP0020
Ø25	RUP0025
Ø32	RUP0032
Ø40	RUP0040
Ø50	RUP0050
Ø63	RUP0063

محول ذكر

Raccord union mâle en PPR / PPR TRANSITION UNION MALE



SIZE	CODE
Ø20*½"	RUM2015
Ø25*¾"	RUM2520
Ø32*1"	RUM3225
Ø40*1*1/4"	RUM4032
Ø50*1½"	RUM5040
Ø63*2"	RUM6350
Ø75*2½"	RUM7563
Ø90*3"	RUM9075
Ø110*4"	RUM11090

محول أنثى

Raccord union femelle en PPR / PPR TRANSITION UNION FEMALE



SIZE	CODE
Ø20*½"	RUF2015
Ø25*¾"	RUF2520
Ø32*1"	RUF3225
Ø40*1*1/4"	RUF4032
Ø50*1½"	RUF5040
Ø63*2"	RUF6350
Ø75*2½"	RUF7563
Ø90*3"	RUF9075
Ø110*4"	RUF11090

كوع بسن مؤنث يربط بالحائط

Applique femelle en PPR 90° / PPR 90° FEMALE BATTERY



SIZE	CODE
Ø20*1/2"	AF2015
Ø20*3/4"	AF2020
Ø25*1/2"	AF2515
Ø25*3/4"	AF2520

كوع بسن مذكر يربط بالحائط

Applique mâle en PPR 90° / PPR 90° MALE BATTERY



SIZE	CODE
Ø20*1/2"	AM2015
Ø20*3/4"	AM2020
Ø25*1/2"	AM2515
Ø25*3/4"	AM2520

أكرة وصل للحمامات و الصونة من البلاستيك

Mamelon de piquage plastique / SADDLE NIPPLE PLASTIC



SIZE	CODE
Ø20*1/2"	MPP2015
Ø25*3/4"	MPP2520

أكرة وصل للحمامات و الصونة بسن مذكر

Mamelon de piquage mâle / SADDLE NIPPLE MALE



SIZE	CODE
Ø20*1/2"	MPM2015
Ø25*3/4"	MPM2520

أكرة وصل للحمامات و الصونة بسن مؤنث

Mamelon de piquage femelle / SADDLE NIPPLE FEMALE



SIZE	CODE
Ø20*1/2"	MPF2015
Ø25*3/4"	MPF2520

أداة مكينة اللحام خاصة

Matrice de piquage / PINCH WELDING APPAT



SIZE	CODE
Ø50/20-25	MP502025

تي منحرف

TE Courbe PPR / PPR TEE CURVE



SIZE	CODE
Ø20	TCB0020
Ø25	TCB0025

أنبوب منحرف مؤنث

Tuyaux en courbe PPR / PPR FEMALE CROSSOVER



SIZE	CODE
Ø20	TC0020
Ø25	TC0025
Ø32	TC0032

سداد بسن مؤنث

Bouchon PPR / PPR STOPEND

SIZE	CODE
Ø20	BO0020
Ø25	BO0025
Ø32	BO0032
Ø40	BO0040
Ø50	BO0050
Ø63	BO0063



SIZE	CODE
Ø75	BO0075
Ø90	BO0090
Ø110	BO0110
Ø125	BO0125
Ø160	BO0160

سداد بسن ذكّر

Bouchon Filletee / PPR STOPEND



SIZE	CODE
Ø20*1/2"	BF2015
Ø25*3/4"	BF2520

داعم

Calles Pour Poteau en beton



SIZE	CODE
Ø25/06-12	CPP25/06-12

داعم أرضي

Calles Pour Semelle en beton



SIZE	CODE
Ø25/08-24	CPS25/08-24

أداة مكينة اللحام

Matrice PPR / PPR WELDING APARAT



SIZE CODE

Ø20 MAT0020

Ø25 MAT0025

Ø32 MAT0032

Ø40 MAT0040

Ø50 MAT0050

Ø63 MAT0063

Ø75 MAT0075

Ø90 MAT0090

Ø110 MAT0110

Ø125 MAT0125

Ø160 MAT0160

أداة مكينة اللحام للتصليح

Matrice de Reparation / WELDING APARAT TO REPAIR



SIZE CODE

6mm MDR6

جهاز لإختبار التسريبات

Appareil à tester fuites / WELDING TO DETECT FLIGHT



CODE

ATF0000

مكينة اللحام

Appareil A fusion / PIPE WELDING SUITCASE



SIZE CODE

Ø20-63 APF2063

Ø75-110 APF75110

مقص أنبوب

Ciseau / PIPE CUTTER



SIZE CODE

Ø3-42 CIS1642

مقص أنبوب

Ciseau / PIPE CUTTER



SIZE CODE

Ø20-75 CIS20-75

مقص أنبوب

Ciseau / PIPE CUTTER



SIZE CODE

Ø14-65 CIS14-65

Ø32-110 CIS32-110

AVANTAGE DU PPR

La tuyauterie PPR(Polypropylène Copolymère Random) est un matériau déformable, au prix économique, elle peut être assemblée par fusion avec des équipements spéciaux de soudage et de coupe. En ajoutant une couche d'isolation thermique, elle peut mieux tenir la température. Le système de tuyauterie en PPR est sécurisé et imperméable, la durée de vie s'élève à 50 ans. Mais, en raison de la haute technicité, la mise en oeuvre de la tuyauterie PPR nécessite des outillages spécifiques et des professionnels pour assurer la sécurité du système de canalisation.

La tuyauterie PPR a des propriétés comme suit:

- Economie d'énergie
- Bonne résistance et poids léger
- Résistance à la corrosion
- Paroi interne lisse et absence d'entartrage
- Facile à installer et réparer
- une longue durée de vie

Applications:

- Au système des canalisations d'eau dans le bâtiment
- Pour l'approvisionnement en eau dans les villes et les campagnes, l'assainissement, le transport des liquides industriels, l'irrigation agricole, etc.

CERTIFICATIONS

